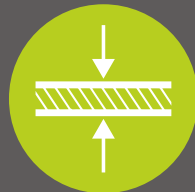


Features & Benefits

Not only do Al Fresco outdoor porcelain tiles look amazing, they also have many other benefits. Tiles have been used within the home for centuries to create amazing spaces, why not extend that to the great outdoors? Al Fresco tiles are manufactured in a way that avoids all imperfections associated with natural stone and traditional paving slabs. Pressed in a raw state and heated at very high temperatures, Al Fresco tiles are stylish, strong and durable.



Uniform Thickness

Al Fresco tiles are manufactured under extremely tight tolerances ensuring an even thickness and stable surface. They also feature precision cut rectified edges for a premium finish every time.



Algae & Moss Resistant

Unlike natural materials such as stone or timber, our outdoor Al Fresco tiles are resistant to algae and moss - no need to worry about your tiles turning green and becoming slippery!



Good Slip Resistance

Al Fresco outdoor porcelain tiles have a good slip rating of R11 making them safe and practical in all weather conditions. For more information on slip ratings, see page 33.



Simple to Install

Create a traditional patio, or loose lay outdoor porcelain tiles onto grass, gravel or sand without the need for any specialist installation equipment. If you already have a solid surface, why not try our Pedestal Support System? For further installation advice, see pages 28-32.



Frostproof

Natural stone and timber is porous and allows water to enter the surface. When this freezes, this can crack the material. Durable under extreme temperatures, Al Fresco outdoor porcelain is completely frostproof.



Easy to Clean

Al Fresco outdoor porcelain tiles are extremely low maintenance. To clean, simply brush with a mix of washing up liquid and water. For stubborn stains, use the Al Fresco Residue Remover. See page 33 for aftercare advice.



Colour Bodied

Sometimes, accidents happen - but don't worry! The core of our Al Fresco outdoor porcelain tiles is colour bodied, meaning that any unfortunate small chips that may occur will barely be noticeable.



Fade Resistant

Perfect for sunny spots, Al Fresco tiles are created using high definition printing techniques with inks that will not fade or lose their colour.

Installation Accessories

From small and intimate patios, to large scale landscaping projects, the AI Fresco collection offers a comprehensive range of installation accessories to complete any project. If you are fixing your tiles with mortar, **Instarmac Pro-Prime Slurry** is an absolute essential to ensure your tiles bond to the base below. Use **AI Fresco Tile Protector** to create a protective seal against installation residues such as mortar and grouting compounds, and for any stubborn stains after installation, use the **AI Fresco Residue Remover**. For a perfect finish, use **Instarmac ProPave Brush-In Grout** to infill joints with minimal effort. An alternative installation method is our **Pedestal Support System** which creates an elevated patio area without the need for lots of equipment. The patio can also be easily moved around or adjusted as the tiles are not fixed with adhesive.



Slurry Primer A10200

- Provides an exceptional bond between outdoor porcelain tiles and a wet mortar bed
- Just add water on-site
- Quick and easy application
- 20kg paper bag covers 15m²*
- NBS Plus registered
- BS 7533 compliant



Brush-In Grout

- Use to fill the gaps between tiles for a seamless finish
- Fast and easy application
- Permeable - allows drainage
- Walk on in just 24 - 48 hours
- Use in all weather
- Resistant to frost and extreme weather conditions
- No waste - left over material can be re-used
- 15kg tub covers up to 25m²**



A10201
Black



A10203
Grey



A10202
Buff



Tile Protector

- Apply before grouting to create a protective seal against cement, grout & jointing compounds
- Apply after grouting to protect both exterior and interior porcelain tiles against the dirt of everyday living
- 1 Litre covers approx 25m²*



Residue Remover

- Rapid action cleaner for removing cement residues, grout stain and other similar deposits
- Suitable for exterior and interior porcelain tiles
- Use diluted or concentrated to remove a variety of stains and residues
- 1 Litre covers approx 25m²*



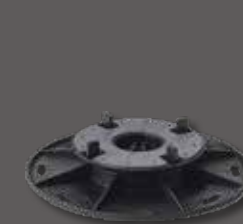
A10082

* Coverage is provided as a guide only and reflects typical application without any wastage. It should not be used as an exact material calculation.

** Based on 600x600mm tile, 20mm joint depth & 3mm joint width.

Pedestals

- Create a patio without the need for lots of equipment
- Pedestals allow for drainage and you can hide cables and equipment underneath
- As the tiles are not attached with adhesive, you can easily move them around
- Can be laid over any solid surface such as existing patios, concrete or balconies
- Self levelling pedestal head creates a stable surface on uneven ground
- Create a clean step front to raised patios using the edge & corner clips
- Easily adjust the patio level using the adjustment key



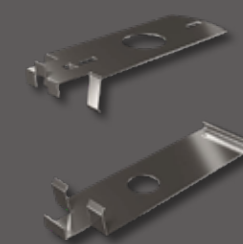
A10122 Small Pedestal
Height 25-37mm



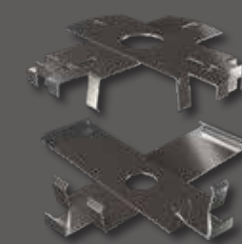
A10123 Medium Pedestal
Height 60-105mm



A10124 Large Pedestal
Height 94-169mm



A10125 Edging Clip
Base & Head



A10126 Corner Clip
Base & Head



A10127 Pedestal
Height Adjustment Key



Design Inspiration

When it comes to laying a patio area in your garden, many people choose a regular grid of square or rectangular slabs, all the same size and colour. It's surprisingly easy to create a practical yet beautiful space by playing with different textures, colours and laying patterns. Here are some simple yet creative ideas to inspire you and help you design your perfect space.

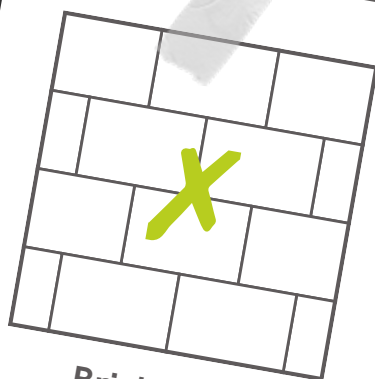
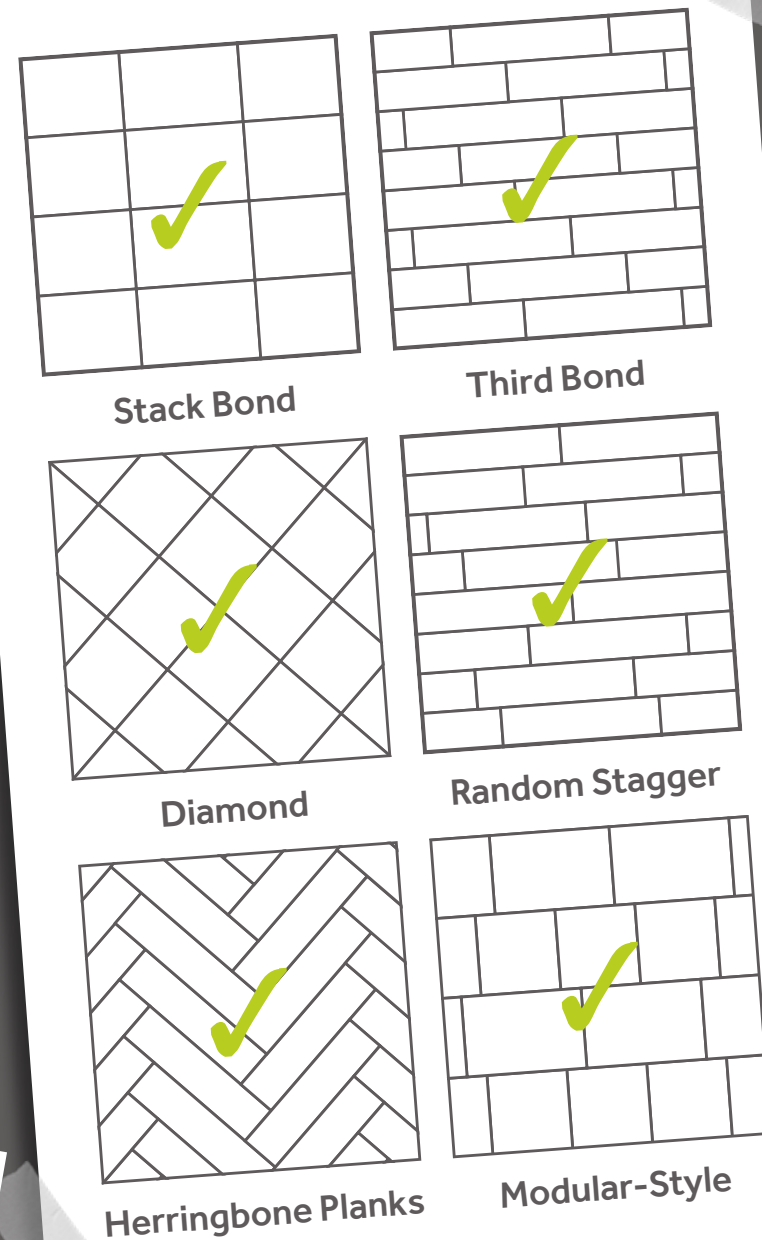
Stack bond is the simplest and most common way to lay a patio. Coordinate your grout colour for a seamless look, or use a contrasting colour to add a simple statement.

Third bond is a great way to lay planks and larger tiles for a contemporary look. Staggering the tiles in this way creates an organic feel and helps to define the shape of the tiles.

You can create an interesting twist on a simple pattern with the **diamond** layout - perfect for square tiles.

Using a **random stagger** is a great way to create a natural look and the **herringbone** pattern is a good way to create a sense of space in small areas - both of these layouts work especially well for planks.

Some of our Al Fresco collection features both square and rectangle tiles in the same design and colour - you can mix these together in rows to create a **modular-style** effect which is really effective in larger spaces.

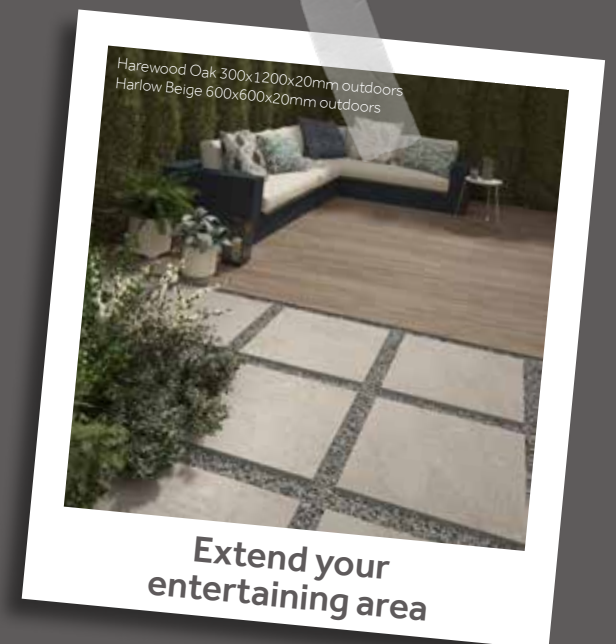


Brick Bond

Larger porcelain tiles inherently have a slight curvature to them, which means that fixing them in a **brick bond** layout can make the floor appear slightly uneven. Although we don't recommend it, if you try laying your tiles in a **brick bond** pattern and you're happy with the level of evenness between each row of tiles then there's no reason why you can't lay them in this way.



Zone your space



Extend your entertaining area



Create elegant walkways



Mix & match collections



Step up your style



Add modular interest

Installation Advice

With the right materials and preparation, you can easily install your own Al Fresco tiles. Follow these simple steps to create your own seamless indoor & outdoor space. Installing your own Al Fresco tiles is both rewarding and satisfying but before you begin, be sure you have the correct tools and the appropriate protective equipment. Always wear gloves and safety footwear when working with outdoor porcelain tiles. Handle your tiles with care to avoid breakages and seek assistance when lifting.

How to install a porcelain patio on wet mortar



Step One

Firstly, mark out the area where you want your patio to be with posts and string. Measure the length and width of your area and multiply these values together to calculate the square meterage. If your area is not a straight forward square or rectangle, break each area down into smaller rectangles. Calculate each rectangle, then add these values together. Once you've calculated the total square meterage, multiply this number by 1.1. This adds 10% extra on to your total to allow for cuts and wastage.



Step Two

Although outdoor porcelain tiles don't need to be sealed to protect them from water penetration, you may find the installation process easier if you coat the tiles before installation with Al Fresco Tile Protector. This prevents mortar and slurry from becoming ingrained in the surface of the tiles and makes cleaning up after installation even easier. Apply to the surface of the tile with a foam roller, taking care not to coat the edges as this can prevent the grout from bonding.



Step Five

Add a layer of mortar on top of the compressed hardcore. We recommend 4 parts sand to 1 part cement.



Step Six

Place 7 litres of clean water in a suitable container. Add UltraScape Pro-Prime powder slowly and mix for 3 to 5 minutes to create a smooth lump-free slurry. Coat the underside of the first tile with priming slurry. Using priming slurry is an essential step to ensure that your tiles bond to the mortar bed.



Step Three

Before you lay your tiles, you will need to prepare the ground, by digging to a depth of around 150-200mm. Your ground should have a slight slope to allow for drainage. If you're tiling up to the edge of a house or wall, the slope should run away from the structure.



Step Four

Fill with hardcore (gravel and crushed hard rock) to a depth of 100-150mm and use a rake to distribute the mixture. Compress the hardcore using a whacker power plate, building up in layers. Remember to check that your ground still has a slight slope.



Step Seven

Place the tile into position, using a corner as a starting point - for example next to a wall or house. Press into place and use a rubber mallet and spirit level to secure and adjust the level, remembering to take drainage into consideration. Continue to lay tiles in this way leaving a 3-5mm gap between each one. Use a bucket of water and sponge to clean up any mortar or slurry as you go.



Step Eight

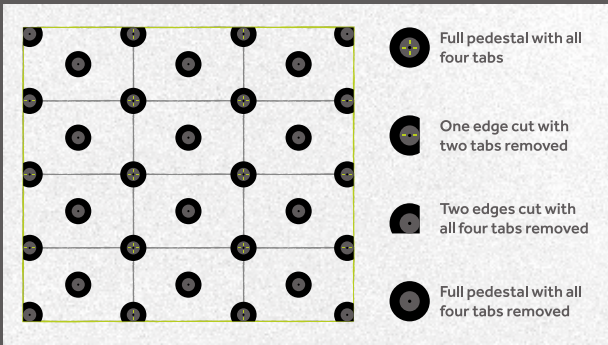
Avoid walking on your newly laid patio for a minimum of 24-48 hours to allow it to dry and strengthen. If you wish to infill any joint gaps, we recommend using ProPave Brush-In Grout designed for outdoor porcelain tiles. Use a brush to mix over the joints, gradually and evenly filling them all in. Once the joints are filled, use a pointing trowel to firm the grout into place. Add more grout if needed to create a clean and level finish.

How to create a raised patio with pedestals



Step One

Pedestals are a great way to create a patio area without the need for lots of messy equipment or tools. They can be laid on top of any solid surface such as existing patios, tarmac driveways or even balconies. It's a good idea to place a layer of weed membrane down under the pedestals so that you don't get weeds growing up through the gaps. If your sub-surface is completely solid such as a concrete slab or balcony, you can skip this step. If you don't already have a solid sub-base, you will need to create one before you begin installation.



Step Two

Before you begin, you will need to calculate how many pedestals you need. The easiest way to do this, is to measure and sketch out your patio plans. The spacer tabs in the top of the pedestal head hold up to four tile corners in place. For the edges, you will need to remove two of the spacer tabs, and for corners you will need to remove all of the spacer tabs so that the tile sits flush on top. For larger tiles you may wish to place an additional pedestal without spacer tabs in the centre for extra support.



Step Five

Continue to lay your tiles, adjusting the height and level as you go by inserting the adjustment key between the tile joints and twisting. Once the whole pedestal patio area is complete, review the level again and adjust if needed.



Step Six

If you need to create a step front, measure and cut your tile to the correct height (see page 32 for cutting advice). Temporarily remove any tiles from the main patio area that lay on top of an edge or corner and prepare the edging clips by laying one piece underneath the pedestal, and one piece on top. The top piece should slot on top of the spacer tabs.



Step Three

Prepare your pedestals for the edges and corners. For the edges, cut along the base line to remove one side. For the corners, cut along an additional base line to remove two sides and create a right angle. To remove the tabs, simply snap and pull with your fingers or pliers.



Step Four

Use a corner as a starting point such as next to a wall, house or fence, and place the first pedestal. Place three more pedestals in a grid layout to fit the measurements of your tile. Twist the pedestal by hand or with the adjustment key to alter the height. Align the pedestal head so that the cross shaped keyhole is at a right angle to the tile corner. Place the tile on top of the pedestals ensuring that the corners sit flush into the tabs.



Step Seven

Place the cut tile piece in between the clips to hold it in place. If you wish, you can secure the edging clips with silicone or glue but this is not essential. Repeat this process for the corner clips until your step front is completed.



Step Eight

Place your tiles back in place on top of the pedestals to complete the look.

How to cut outdoor porcelain tiles



Step One

Outdoor porcelain tiles are super strong and cannot be cut using traditional hand tools. In order to minimise breakages and spoiled cuts, we recommend using a water fed cutter with a diamond blade. This will also help to minimise dust. Always wear gloves, safety footwear, goggles & respiratory protection when using cutting equipment. Handle your tiles with care to avoid breakages and seek assistance when lifting.



Step Two

Measure and mark a line where you would like to cut the tile. Cut from the top surface with the blade running at half-revs. Bring the blade into contact with the tile. As the blade bites the tile, increase the revs if necessary and progress along the marked line. Ensure the blade is water fed throughout and remains evenly balanced. Do not attempt to plunge the blade through the tile in one go - progress steadily and repeat the process until the tile is cut.

Aftercare



Clean & Protect

Maintaining your porcelain tiles is easy, simply sweep away any loose dirt regularly, and brush with warm soapy water for an extra clean as and when needed. Outdoor porcelain tiles do not require sealing, however you may wish to apply Al Fresco Tile Protector after grouting to protect your tiles against the dirt of everyday living.



Stains & Residues

For any mild stains and residues, dilute 1 part Al Fresco Residue Remover in 4 parts water. Dampen a cloth or sponge and wipe thoroughly. For tougher stains and residues, dilute 1 part Al Fresco Residue Remover with 1 part water. Apply liberally over the surface of the tile and agitate with a scrubbing brush. Leave for 5-10 minutes before rinsing with clean water. For extremely stubborn stains, use undiluted Residue Remover and agitate with a scrubbing brush. Always rinse the surface with clean water afterwards.

How to lay stepping stones or staggered patios



Step One

It's easy to create walkways and staggered patios by loose laying your outdoor tiles. If your surface is solid and secure, outdoor porcelain tiles can be simply placed on the ground. If the ground is soft or uneven in any way, you will need to make the surface stable.



Step Two

To make a stable surface, create a base with a layer of sharp sand or fine gravel, then place your tile on top. If you're laying your tiles on to grass, you may wish to cut away a square of turf and dig down slightly so that the tile lays flush with the surface.